

Badia BigPicture 4.0 for Adobe InDesign CS4 User Guide

Copyright ©2001–2010 Badia Software, a division of Riodia Enterprises, Inc. All Rights Reserved.

System Requirements

- Adobe InDesign CS4
- Mac OS 10.5.x Leopard, or Mac OS 10.6.x Snow Leopard

Can be installed on Mac OS 10.4.x Tiger, but this system is no longer supported nor recommended.

How to Install, Update or Uninstall

Double-click the appropriate **BigPicture 4.x Installer** icon and follow the on-screen instructions. You can use the same installer to install for the first time, update to a new version, or uninstall the software.

By installing Badia BigPicture, you agree to the Terms and Conditions listed in the License Agreement document.

30-Day Trial Period and Activation

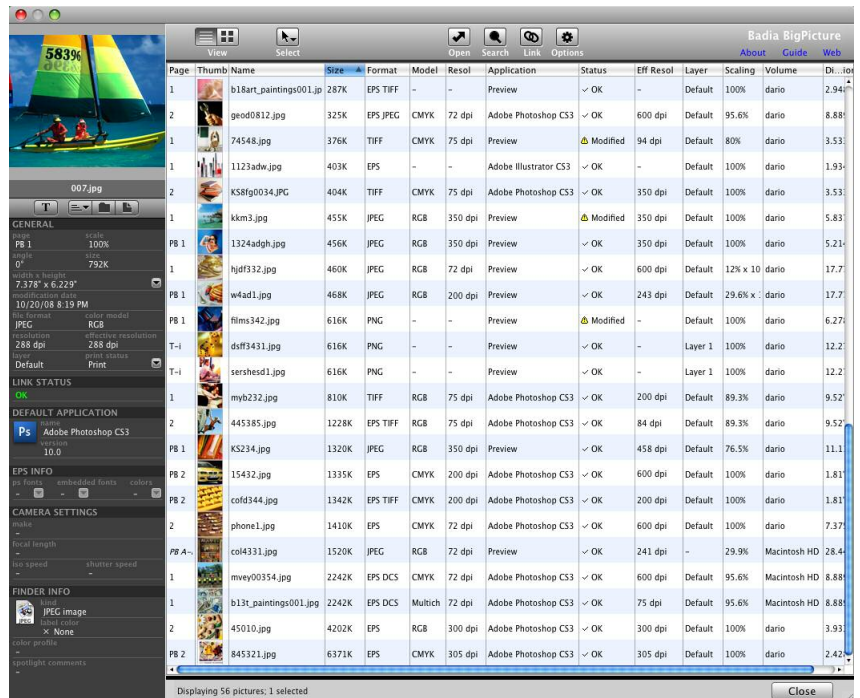
BigPicture will run in trial mode when it's first installed. You have 30 days to test-drive this product without activating it. To activate and unlock the usage restrictions, click the **“About”** link and then the **“Activate Now”** button. Simply follow the instructions shown on screen to complete the activation process. The number of licenses that you purchase determine the exact number of computers that you are allowed to activate this software.

User Guide

Badia BigPicture 4.0 is a plug-in for Adobe InDesign CS4 that displays detailed information about each picture used in a document. It also provides powerful tools for managing links and accessing image files. All BigPicture features are presented in a single window, which can be opened by selecting **File->Badia BigPicture** from the InDesign menu.

List View

The list view contains entries for each picture used in document or master pages in a line by line format. Fourteen columns of information are displayed, and you can choose what attribute you want to display in each column (see **Options** panel).



You can sort the list by clicking on any of the column headers, then click again to change it from ascending to descending order and viceversa.

Here's a brief description of the attributes you can display:

Angle – The picture angle within the picture frame.

Color Profile – The embedded color profile saved with the picture (if present).

Default Application – The default application to open the image file, as reported by the Finder.

Dimensions – The dimensions of the picture (width x height), if available.

Effective Resolution – The effective resolution takes into account the scaling of the image in the picture frame. For example, a 150 dpi image imported at a 50% scale will yield a 300 dpi effective resolution (because there are twice as many pixels per inch as there would be if it were imported at 100%).

EPS Colors – The number of custom colors contained in the EPS image file (if any).

EPS Fonts – The number of fonts (PostScript and Embedded) contained in the EPS image file (if any).

Folder – The enclosing folder of the picture.

Format – The image file format, such as EPS or TIFF. It also indicates file compression, if any (e.g. TIFF LZW).

Layer – The name of the layer where the picture is located in the document.

Name – The name of the picture file.

Model – The image color model, such as RGB or Grayscale.

Modified Date – The date the picture file was last modified.

Page – The number of the page in which the picture resides. A “PB” prefix preceding the page number indicates that the picture is in the pasteboard.

Path – The image full path.

Print Status – The print picture status (Print or Suppress Output).

Resolution – The absolute image resolution, in dots per inch (dpi).

Scaling – The horizontal and vertical scale applied to the image within the picture frame. If both are the same, only one percentage value is shown.

Size – The size of the image file in kilo (K) or mega (M) bytes.

Status – The current image link status. Possible values are: OK, Missing, Modified, Embedded.

Thumbnail – A thumbnail of the image.

Volume – The volume where the picture resides.

Thumbnail View

You can also view the full set of document pictures in thumbnail view. Under this mode, only the picture name and thumbnail are shown. Images are sorted following the last sorting order of the list view.

Initially, the thumbnails shown are just icons for each of the picture files as displayed by the Finder. BigPicture can also create accurate thumbnails, although they may take some time depending on the amount of pictures and computer speed. You control whether to display accurate thumbnails using the **Options Panel -> Create Accurate Thumbnails for Thumbnail View** preference.

Info Sidebar

The info sidebar at the left-hand side of the BigPicture window contains the full picture preview and complete picture information (when a single image is selected). Additional buttons are shown:

- **Picture Renaming** – See below.
- **Path** – The picture path. From the pop-up you can select any enclosing folder to reveal that folder in the Finder.
- **Reveal in Folder:** Displays and selects the image file in the Finder.
- **Reveal in Document:** Displays the selected picture in the document window.
- **Dimensions Pop-Up** – Allows you to set the units for displaying image dimensions.
- **Print Status Pop-Up** – Allows you to switch the print status of the selected pictures from **Print** to **Suppress Printout**, and viceversa. Works for multiple selections too.

In addition, the following information is also available for single selections:

- **Default Application** – The name and version of the default application.
- **Embedded EPS Fonts** – The PostScript fonts and Embedded fonts of EPS files.
- **Camera Settings** (if available): **Camera Model, Focal Length, ISO Speed, Shutter Speed**
- **Finder Info** – The file icon, kind label, color profile and spotlight comments, as reported by the Finder.

Renaming Pictures

To rename a picture, click on the button with a “**T**” icon of the Info Sidebar to make the picture name editable. Type in the new name and then hit the Return or Enter keys. This will change the name of the actual file in the Finder and automatically update the link in InDesign, including all picture occurrences. You cannot rename pictures that are missing or that have no external image file.

Select Button

The Select button allows you to select pictures from the picture list: ‘All’, ‘None’ or pictures that have the same attributes. For this last option, you must first select a single picture. All pictures that have the same attribute will be selected.

Task Panel Buttons

The **Open, Search, Link** and **Options** buttons at the top of the BigPicture window allow you to open and close the respective task panels. A description of each panel follows:

The Open Task Panel

This task panels permits opening the selected pictures with the default application or any application you choose.

- **Open With List:** The list of applications available to open the images. Click to **Add Application** button to add applications, or the **Remove** to remove an entry. Click **Add Default** to add the default application to the list. The list can contain a maximum of 50 applications.
- **Open Now:** Click this button to open the pictures with the currently chosen application.

TIP: After editing pictures and returning to BigPicture, you don’t need to close and reopen the BigPicture window. BigPicture will recognize that the pictures were modified within a few seconds of being saved. Simply select the **Update Selected Picture(s)** option or **Update All Modified** from the **Link** panel to bring them up to date.

The Search Task Panel

One of the most valuable features of BigPicture is its capacity to search volumes to locate missing pictures or any picture name you enter. The **Search** panel contains tools for performing this search. You can choose to limit the search to any of the mounted volumes or to search all of them. The search is not case sensitive and any partial matches will be found. All matches will be shown, regardless of whether they are picture files or not.

To speed up the search, BigPicture stops searching the volume after a specified number of matches has been found. You control this threshold using the **Stop Search After** popup (a value between 1 and 90).

NOTE: BigPicture uses the Mac OS catalog file to perform a volume search. Though this method is the fastest available, not all volumes support it (in particular, Windows volumes). When catalog search is not available, searching is done sequentially (i.e. file by file), slowing down performance.

The resulting list shows the volume, file name, and file type. Selecting one of the entries enables the **Full Path** button (to show the file full path), **Reveal in Folder** button (to reveal it in the Finder), the **Open** button (to open it with its default application), and the **Relink** button (to relink it with the currently selected document picture). When relinking is available, you'll see previews of the original and found images. It is up to you to make sure the new picture you are linking to is a valid picture file. You also have options to retain picture attributes and update all occurrences.

TIP: When you click on a picture whose status is Missing, BigPicture will automatically place its name in the Search field, so you can just press the **Search** button to search for it.

The Link Task Panel

Contains the following tools:

- **Update Selected Picture(s):** Available when the link status of the selected pictures is other than OK. If a picture is missing, a dialog appears which allows you to locate it and reestablish the link. From this dialog you can then check the **Update All Occurrences** button to have BigPicture update all instances of the same picture in the document. After updating a missing picture link, BigPicture checks to see if other missing pictures are located in the folder containing the updated link. If so, a dialog appears allowing you to update those links as well.
- **Update All Modified Pictures:** In a single step updates every picture in the document that have a Modified status. The total number of modified pictures found will be reported.
- **Relink Action:** Select from any of the following relinking functions:
 - **Replace One Link:** You can use this tool to replace a picture with a completely different one, regardless of its current status. You have the option of retaining previous picture attributes and replacing all picture occurrences in the document.
 - **Auto Swap Links:** This feature allows you to change the path of selected pictures from one folder to another containing pictures with the similar name. This allows quick switching back and forth between a folder with low resolution pictures and one with high resolution pictures, for example. If the new folder does not contain a selected picture whose status was not Missing, its path will not change.

Options:

- **Match Name Only:** Matches only the file name portion, regardless of the file extension.
- **Match Name + Same Extension:** Matches both the name and file extension (exact match).
- **Match Name + Custom Extension:** Matches the name plus any file extension to enter.
- **Move Links to Folder:** This feature allows you to move selected pictures from their original folders to a new one. The new folder must reside in the same volume as the original folders. After moving the image files, BigPicture will update all the links accordingly.

- **Copy Links to Folder:** Allows you to copy the selected pictures from their original folders to a new one. After copying the image files, BigPicture will link the files to the new folder.
- **Collect Links to Folder:** Same as *Copy Links to Folder*, but without updating the links (i.e. after collecting, images will still be linked to their original folders).
- **Choose Button:** Allows you to choose the new replacement file (for Replace One Link), or the folder to relink the images.

The Options Task Panel

This panel allows you to customize BigPicture:

List View Column – Select what attribute to display in each of the 14 columns of the List View. You can also change the width of each column here.

List View Row Height – Choose the size of the rows for the List View.

Create Accurate Thumbnails – Choose whether to create accurate thumbnails to display in the List View (if Thumbnails is one of the columns) or Thumbnail View. Creating accurate thumbnails may take some time depending on the amount of pictures and computer speed.

Double-Click Action – The action BigPicture performs when double-clicking on a picture entry.

Show Pasteboard Pictures – Controls whether to include pictures located in the pasteboard.

Show Master Page Pictures – Controls whether to include master page pictures.

Show Duplicate Entries – When this setting is on, all occurrences of the same picture are displayed. When off, only the first occurrence in the document is shown.

Reset Window Size – Resets the window to its minimum size.

BigPicture Preferences File

BigPicture creates a preferences file to store the last settings used. This file is saved at this location: **/<User Name>/Library/Preferences/BadiaSoftware/Badia BigPicture 4.0 for ID Prefs**). To reset the preferences and revert to the default settings, remove this file or hold **Command-Shift-Option** when invoking BigPicture from the InDesign menu.

Badia BigPicture 4.0 for Adobe InDesign CS4

Copyright ©2001-2010 Badia Software, a division of Riodia Enterprises, Inc. All Rights Reserved.

Liability. The information in this guide and the computer software are distributed on an “As Is” basis, without warranties or guarantees of any kind. While every precaution has been taken, Badia Software shall have no liability to any person or entity with respect to any loss or damage caused or alleged to be caused directly or indirectly by the instructions contained in this book or by the computer software described in it. See the License Agreement file for a complete description of the Terms and Conditions.

Trademarks. BigPicture is a trademark of Riodia Enterprises, Inc. InDesign is a trademark of Adobe Systems Incorporated. All other trademarks are the properties of their respective owners.